

Product Description

Applications

CavClear® Rainscreen Mat Heavy Duty (CCRS-HD-020) is a non-compressible, permeable mat engineered for installation behind fiber cement board, cedar, vinyl and aluminum lap siding applications to manage both moisture and moisture vapor.

Background and Use

Moisture management is the most important factor to ensure problem-free performance of any building enclosure system. No cladding system is completely water-tight. Moisture will find its way into exterior walls from rainwater intrusion and infiltration of outside, moisture-laden air through gaps, penetrations and cracks in the surface of the cladding material.

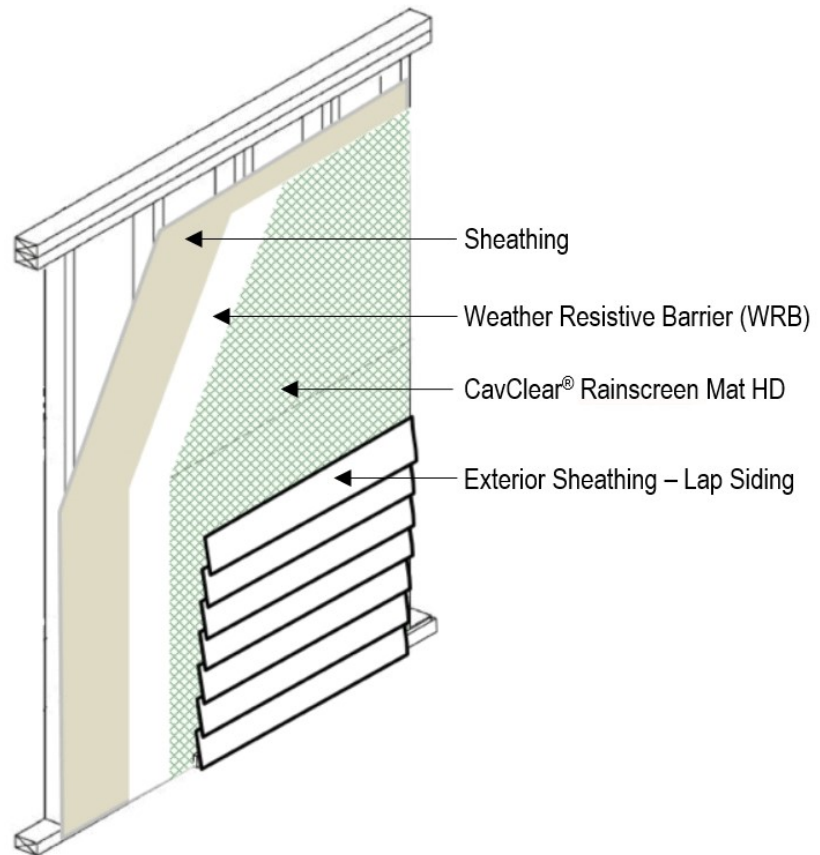
The best method to control this moisture is to ensure that it is effectively drained down and out of the exterior wall assembly, while also providing a means for ventilation that will allow remaining moisture vapor to decrease during drying periods. By increasing the assembly's drainage and drying abilities, the risk of moisture-related problems decreases.

CavClear Rainscreen Mat Heavy Duty has been specifically engineered for high-performing, resilient designs that are effective in both moisture and air management by creating a capillary break between the exterior cladding and the drainage plane.

Composition and Materials

CavClear Rainscreen Mat Heavy Duty is a diamond shaped, extruded plastic netting made from high density polyethylene (HDPE). Two layers of parallel strands are overlaid at angles to create the diamond-shaped netting that provides for both horizontal and vertical air movement. Each strand is square to provide superior compressive strength to maintain the perfect shape and performance behind siding and cladding materials.

Lap Siding with CavClear® Rainscreen Mat HD



Benefits

- Diamond-shaped mesh design with two crisscrossed layers provides both vertical drainage and horizontal ventilation to accelerate drying.
- Creates an effective 0.2" continuous capillary break to minimize the capillary water movement into the wall system.
- Non-compressible yet flexible even in cold weather.
- Mold and mildew resistant.
- Easy to install, store and ship.
- Eliminates the need for more labor-intensive furring strip methods, however it can be used behind traditional furring strips to allow for cross ventilation of the chambers and add depth to the capillary break.
- Easier to install and more effective than furring strip methods.
- Compatible with other building components and all cladding and siding products.

Technical Data

Applicable Standards

ASTM E2925 - Standard Specification for Manufactured Polymeric Drainage and Ventilation Materials Used as Part of a Rainscreen Assembly.

ASTM E84 - Standard Test Method for Surface Burning Characteristics of Building Materials.

Environmental Considerations

The mat is recyclable at the end of its service life.

Fire Performance

ASTM E84 Class A fire rating. Flame spread - 20; Smoke developed - 200.

Residential Building Codes

Meets 2014 Oregon Residential Specialty Code, Section R703.1.1 Exterior Wall Envelope that requires a minimum 1/8 inch (3 mm) space between the water-resistive barrier and the exterior veneer.

Installation must comply with the requirements of all applicable local, state and federal code jurisdictions.

Sizes

Standard Sheets

Mfr Code: CCRS-HD-020 39x48

0.2" x 39" x 48" = 13 sf/sheet

Pallet Qty: 200 sheets = 2600 sf/pallet

Rolls - Custom Order Only

Mfr Code: CCRS-HD-020 39x85

0.2" x 39" x 85' = 276.25 sf/roll

Pallet Qty: 9 rolls = 2486.25 sf/pallet

Ships in full pallets only.

Installation

Handling and Storage

Store CCRS-HD in a clean, dry area off the ground until ready to install. Do not store at temperatures below -40°F.

Preparation

Apply a weather resistant barrier (WRB) over sheathing in compliance with local building codes. Archovations recommends using a self-sealing, liquid applied WRB when possible.

Inspect to ensure that all windows, doors and other penetrations have been properly installed and flashed.

Methods

Starting at the base of the wall, staple sheets to the sheathing through the WRB. Limit the number of fasteners to reduce punctures in WRB. Butt adjacent mat sheets at all joints using moderate contact without overlap. Allow gaps and voids no greater than 1.0". Apply exterior cladding over CavClear Rainscreen Mat HD using cladding manufacturer's recommended fasteners and spacing.

Precautions

Install to exterior sheathing when temperatures are above -30°F.

Availability and Cost

CavClear brand products are sold through building materials dealers throughout the USA and Canada. To locate a dealer or to obtain budget installed cost information, contact Archovations, Inc. at 715.381.5773.

Warranties

CavClear Rainscreen Mat HD is warranted to the buyer to be free from defects relating to manufacturing for a period of ten (10) years after the date of purchase. The buyer's sole and exclusive remedy against Archovations, Inc. shall be for the replacement, but not the installation, of defective products. Archovations has no control over the installation, workmanship, accessory materials or conditions of application and does not guarantee finished work. Complete warranty terms and conditions are available from the manufacturer.

Maintenance

None required.

Technical Services

Technical assistance, including more detailed information, product literature, test results and assistance in preparing project specifications, is available by contacting Archovations, Inc.

Filing Systems

ZeroDocs.com
BSD SpecLink
Masterspec
ARCOM e-SPECS
ARCAT